

THANK YOU FOR PRACTICING SOCIAL DISTANCING

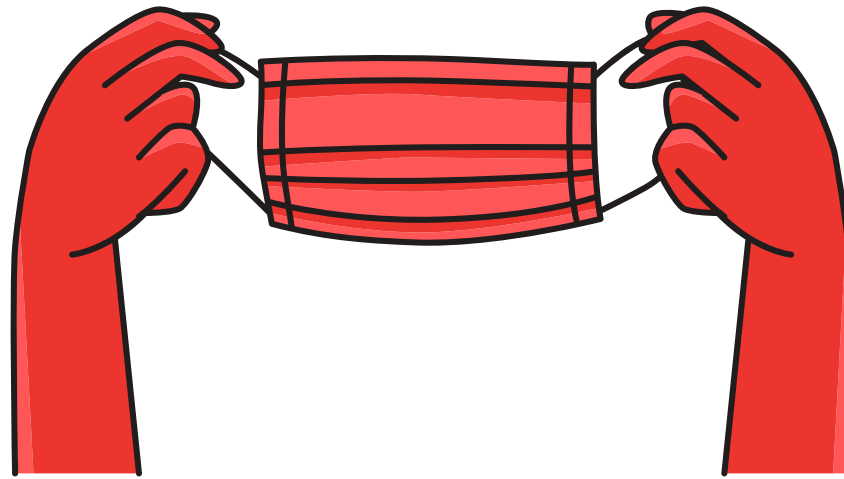


**PLEASE KEEP SIX FEET
APART AT ALL TIMES**



GLOBAL
HOTEL GROUP

YOUR SAFETY IS OUR TOP PRIORITY



**OUR TEAM MEMBERS ARE
WEARING PERSONAL
PROTECTIVE EQUIPMENT
FOR YOUR SAFETY, AS WELL
AS THEIRS.**

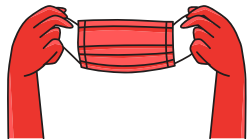


GLOBAL
HOTEL GROUP

**FOR THE HEALTH AND WELL BEING OF OUR STAFF
AND GUESTS, AND IN ACCORDANCE WITH
GOVERNMENT REGULATIONS, WE ASK
ALL OF OUR GUESTS AND VISITORS
TO PLEASE FOLLOW THESE GUIDELINES:**



**DO NOT ENTER THE FACILITY IF YOU ARE
EXPERIENCING SYMPTOMS OF COVID-19, INCLUDING
COUGH, FEVER OR SHORTNESS OF BREATH.**



**IT IS RECOMMENDED THAT ALL GUESTS AND VISITORS
WEAR FACE COVERINGS OVER THEIR NOSE AND
MOUTH WHILE IN THE HOTEL'S PUBLIC SPACES.**



**PLEASE OBSERVE SOCIAL DISTANCING GUIDELINES
BY STAYING SIX FEET APART FROM OTHERS
WHENEVER POSSIBLE.**

**YOUR SAFETY
IS OUR TOP PRIORITY**



**GLOBAL
HOTEL GROUP**

DO THE FIVE

#STOPTHESPREAD



GLOBAL
HOTEL GROUP

HANDS

WASH
THEM
OFTEN

ELBOW

COUGH
INTO
IT

FEEL

SICK?
STAY
HOME

FEET

STAY MORE
THAN SIX
FEET APART

FACE

DON'T
TOUCH
IT

THANK YOU FOR PRACTICING SOCIAL DISTANCING

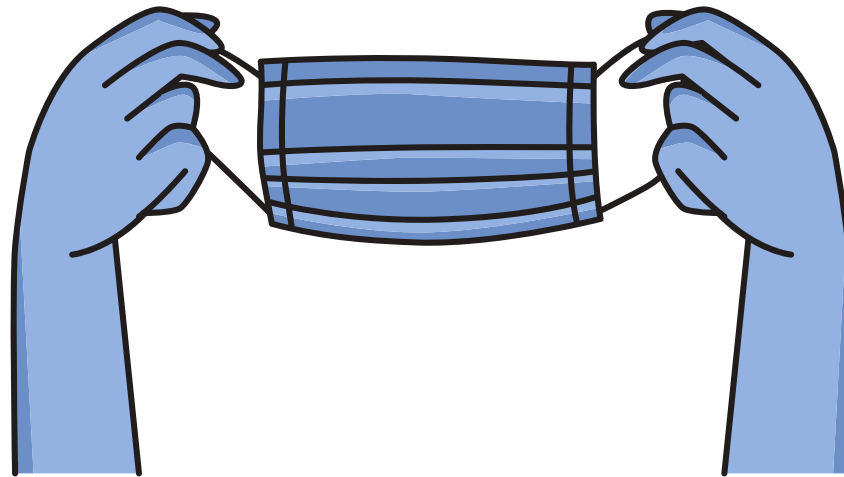


**PLEASE KEEP SIX FEET
APART AT ALL TIMES**



GLOBAL
HOTEL GROUP

YOUR SAFETY IS OUR TOP PRIORITY



**OUR TEAM MEMBERS ARE
WEARING PERSONAL
PROTECTIVE EQUIPMENT
FOR YOUR SAFETY, AS WELL
AS THEIRS.**

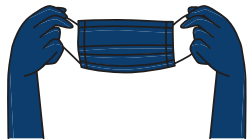


GLOBAL
HOTEL GROUP

**FOR THE HEALTH AND WELL BEING OF OUR STAFF
AND GUESTS, AND IN ACCORDANCE WITH
GOVERNMENT REGULATIONS, WE ASK
ALL OF OUR GUESTS AND VISITORS
TO PLEASE FOLLOW THESE GUIDELINES:**



**DO NOT ENTER THE FACILITY IF YOU ARE
EXPERIENCING SYMPTOMS OF COVID-19, INCLUDING
COUGH, FEVER OR SHORTNESS OF BREATH.**



**IT IS RECOMMENDED THAT ALL GUESTS AND VISITORS
WEAR FACE COVERINGS OVER THEIR NOSE AND
MOUTH WHILE IN THE HOTEL'S PUBLIC SPACES.**



**PLEASE OBSERVE SOCIAL DISTANCING GUIDELINES
BY STAYING SIX FEET APART FROM OTHERS
WHENEVER POSSIBLE.**

**YOUR SAFETY
IS OUR TOP PRIORITY**



**GLOBAL
HOTEL GROUP**

DO THE FIVE

#STOPHESPREAD



GLOBAL
HOTEL GROUP

HANDS

WASH
THEM
OFTEN

ELBOW

COUGH
INTO
IT

FEEL

SICK?
STAY
HOME

FEET

STAY MORE
THAN SIX
FEET APART

FACE

DON'T
TOUCH
IT